



Welcome Information

A very warm welcome to the Department of
Environmental Systems Science

Dear new Professor at D-USYS, ETH Zurich

We wish you a very warm welcome to the Department of Environmental Systems Science, short D-USYS! It is great to have this opportunity to work and interact with you for teaching and science as well as for outreach!

In order to ease making D-USYS your new scientific home, we have compiled some information we consider relevant, particularly in the context of our department.

Getting started at ETH

You will receive quite some information from various ETH [Staff Units](#) and from the [Administrative Departments](#), e.g. from the [Office for Faculty Affairs](#) (Stab Professuren), [Human Resources](#) (Personalabteilung, HR) and [Finance & Controlling](#) (Finanzabteilung, FC). Take some time in the beginning and read through this. You will also receive invitations and visits from these units within your first couple of weeks and months at ETH Zurich. Yes, it can be confusing; but, please, do not feel overwhelmed. Ask the Departmental Services staff, they are happy to help you.

Words and terms in blue are linked to the respective websites in the electronic version of this document. All links are available in German and in English, just change the language at the upper right of the webpage.



Our department

The [Department of Environmental Systems Science](#) (Departement für Umweltsystemwissenschaften, D-USYS) is one of the largest departments of ETH (16 departments in total), has more than 50 professorships, and is organized in six **institutes**:

- Institute of Agricultural Sciences ([IAS](#))
- Institute for Atmospheric and Climate Science ([IAC](#))
- Institute of Biogeochemistry and Pollutant Dynamics ([IBP](#))
- Institute of Integrative Biology ([IBZ](#))
- Institute for Environmental Decisions ([IED](#))
- Institute of Terrestrial Ecosystems ([ITES](#))

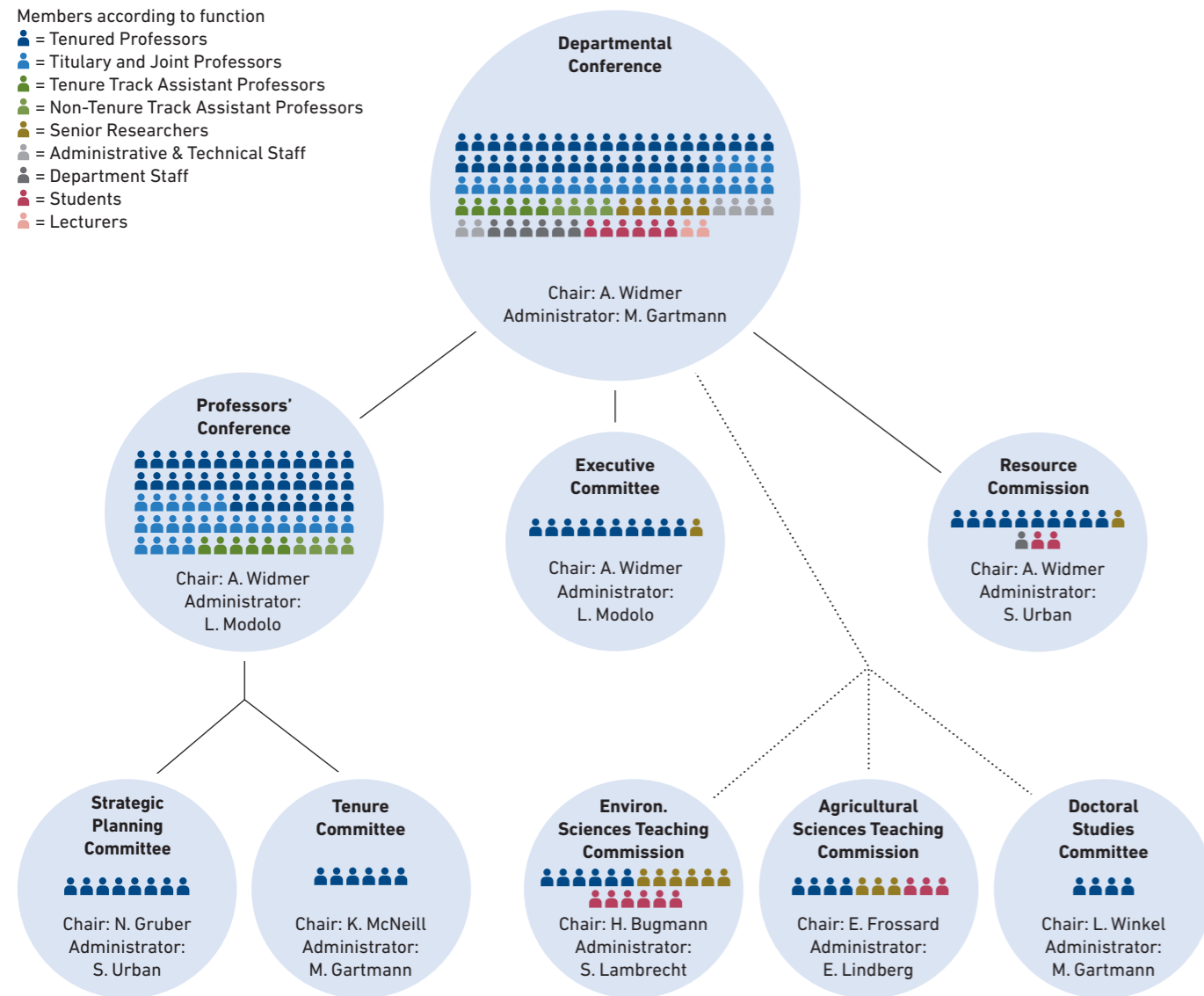
Important: Ask the Head of your institute who will support you in administrative and technical matters and get in contact with him/her as soon as you arrive or even before. They are crucial for a smooth start.

The [Executive Board of D-USYS](#) (Departementsleitung) is chaired by the **Head of Department** Alex Widmer (Vorsteher/in) who represents the department to the outside, is the first contact point by the [ETH Executive Board](#) (Schulleitung, SL) and chairs many internal committees. The head of department is supported by the **Deputy Head**, Nicolas Gruber, the two **Directors of Studies** (Studiendirektor/in; responsible for the four study programmes offered by D-USYS), Emmanuel Frossard and Harald Bugmann. All are supported by

the [Departmental Services](#) (Stab), who provide support to all members of the department. They also handle ETH-wide activities and are contact persons for students, doctoral students, staff and professors alike. For further details, check out the center of this brochure. New professors are invited to a Departmental Services coffee meeting on a Monday morning in order to get to know each other.

The **decision-making** within D-USYS is done in different committees (some also called conferences), responsible for different departmental affairs, e.g. teaching, research, resources, strategy. These committees vary in composition. For most, all groups (Stände) in the D-USYS are represented: professors, lecturers & postdocs & doctoral students, Bachelor's & Master's students as well as technical & administrative staff. The Professors' Conference is the only committee only composed by professors. Typically, committees meet twice in a semester, dates are known years or months in advance and are published in the [internal D-USYS calendar](#) as well as in the [ETH academic calendar](#). Agendas are sent out one week prior to the meeting. If you cannot attend a meeting, please let the chair of the meeting know well in advance!

- Members according to function
- = Tenured Professors
 - = Titulary and Joint Professors
 - = Tenure Track Assistant Professors
 - = Non-Tenure Track Assistant Professors
 - = Senior Researchers
 - = Administrative & Technical Staff
 - = Department Staff
 - = Students
 - = Lecturers



The following list gives an overview about the **different committees** and their **most relevant tasks** (not complete; details can be found in the [bylaws](#), available in German only). If unsure to what committee to submit your request, please talk to the Departmental Services staff.

- Department Conference (Departementskonferenz, DK): the department's most supreme body, among other things it approves the profile of a professorship, submits proposals for the selection committee to the president, adopts the bylaws and applies for the positions of the Head of Department, his/her deputy and the two Directors of Studies
- Professors' Conference (Professorenkonferenz, PK): for discussion among professors, deals with tenure and habilitation cases, decisions on adjunct professors, etc.
- Department Committee (Departementsausschuss, DA): deals with permanent employment of senior

scientists, nominations for adjunct professors, personnel in general and the annual dialogue with the ETH Executive Board

- Tenure Commission (TC): deals with tenure procedures within the department
- Strategic Planning Committee (Strategische Planungskommission, SPC): prepares professorial planning, strategic documents and the periodic evaluation
- Resource Commission (Ressourcenkommission, RK): deals with departmental finances, applications for guest professors, applications for jointly used infrastructure, support for competence centres and platforms
- Room Commission (Raumkommission): deals with office and lab space
- Informatics Support Group (Informatik-Support-Gruppe, ISG): deals with computing infrastructure and related financial aspects, supports decision-making

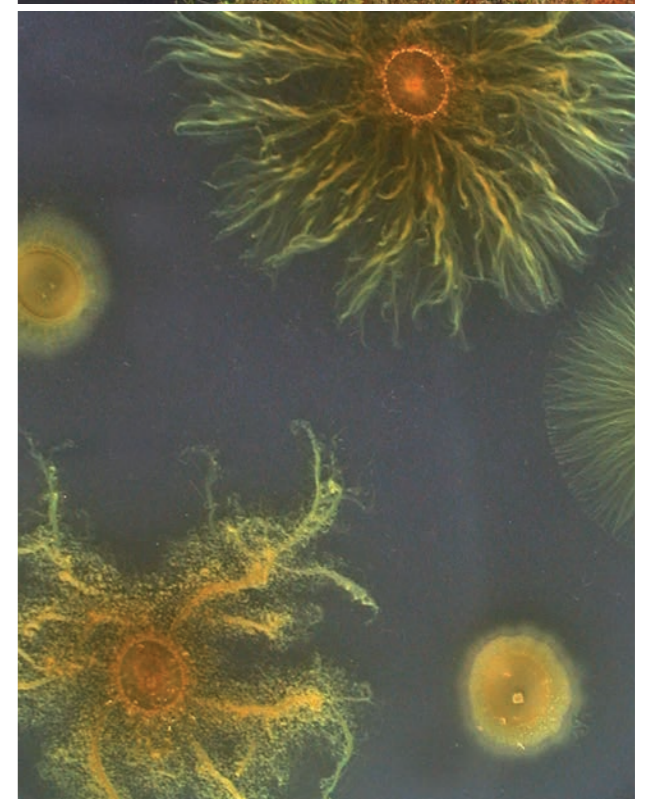
- Teaching Commission for Agricultural Sciences (Unterrichtskommission, UK AGRW) and Teaching Commission for Environmental Sciences (Unterrichtskommission, UK UMNW): deal with courses and excursions in general, e.g. new course announcements
- Doctoral Committee (Doktoratsausschuss): tasks according to [the ordinance on doctoral studies ETH Zurich](#). Furthermore, the commission is responsible for the awarding of the ETH Medal to the most outstanding doctoral thesis.

The D-USYS is a very **transparent** department, e.g. teaching evaluations, group finances and many other aspects are known to all the colleagues, sometimes also to the students. We adhere to the [Code of Conduct of ETH](#) and follow the [Research Integrity and Compliance Guide](#) of ETH. Working and supervision ethics consider the well-being of all our staff members as well as international scientific competition. There are plenty of opportunities to interact, on a day-to-day basis, but also at some departmental events such as New Year's coffee (first week after holidays, beginning of January) and the department's party (typically in September).

Teaching

All curricula of D-USYS, i.e. Agricultural and Environmental Sciences at Bachelor's and Master's levels, are supported by the Teaching Specialists Anouk N'Guyen and Urs Brändle and the Study Coordinators Emma Lindberg and Susanne Lambrecht. If you want to announce a new course, take over an existing course or have any questions about teaching in the wider sense, including course enrolment, grading, planning of exams, etc., please talk to the Teaching Specialists, to the Study Coordinators for [Agricultural Sciences](#) and [Environmental Sciences](#) or to the Directors of Studies Emmanuel Frossard (Agricultural Sciences) and Harald Bugmann (Environmental Sciences). They have the overview and can help you.

You can also download the study brochures of the respective programmes [Agricultural Sciences](#) and [Environmental Sciences](#).





Prof. Dr. Alex Widmer

Head of Department

- Contact person for ETH Executive Board
- Representative of Department
- Head of Department Conference
- Head of Professors' Conference
- Head of Department Committee
- Head of Resource Commission
- Mentor of all Assistant Professors at D-USYS



Prof. Dr. Nicolas Gruber

Deputy Head of Department

- Head of Strategic Planning Committee
- Mentor of all Assistant Professors at D-USYS



Dr. Lara Modolo

Co-Head of Departmental Services, Department Coordination

- Contact person of the department to the ETH Executive Board
- Representative of the Departmental Committee in ETH-wide working groups
- Contact person for academic questions for the researchers of the D-USYS
- Management of the Professors' Conference
- Management of the Departmental Committee



Sabine Urban

Co-Head of Departmental Services, Resource Management

- Budgeting and controlling of core funding
- Contact person in financial matters for all D-USYS employees
- Management of Resource Commission
- Management of Room Commission
- Management of Strategic Planning Committee



Prof. Dr. Emmanuel Frossard

Director of Studies Agricultural Sciences

- Organisation of teaching
- Planning and development of the study programmes
- Quality management of the study programmes



Prof. Dr. Harald Bugmann

Director of Studies Environmental Sciences

- Organisation of teaching
- Planning and development of the study programmes
- Quality management of the study programmes



Dr. Susanne Lambrecht

Study Coordination for Environmental Sciences

- Student advisor for Master's and Teacher Training
- Schedule coordination for Bachelor's, Master's, Doctorate and Teacher Training
- Student exchange advisor
- Management of Teaching Commission



Diana Haller

Study Administration for Environmental Sciences

- Student advisor for Bachelor's
- Study administration for Bachelor's, Master's and Teacher Training
- Advice on administrative questions regarding Master's thesis
- Advice on military and civil service deferrals



Arbenita Scapi

Study Administration for Environmental Sciences

- Study administration for Bachelor's, Master's
- Organisation of teaching-related events
- Administration of excursions
- Substitute doctoral administration



Dr. Jacqueline Schlosser

Coordination Professional Internship Environmental Sciences

- Advice on professional internship
- Assessment and approval of professional internship
- Maintenance of job network
- Management of Advisory Board
- Contact person for Environmental Sciences Alumni



Emma Lindberg

Study Coordination for Agricultural Sciences

- Student advisor for Bachelor's, Master's and Teacher Training
- Schedule coordination for Bachelor's, Master's, Doctorate and Teacher Training
- Advice on military and civil service deferrals
- Management of Teaching Commission Agricultural Sciences



Maria Rey

Study Administration for Agricultural Sciences

- Administration of excursions in Agricultural and Food Sciences
- Study Administration for Bachelor's, Master's and Teacher Training
- Advice on military and civil service deferrals
- Financial Settlements



Petra Gallaun-Schirgi

Study Administration for Agricultural Sciences

- Study administration for Bachelor's, Master's and Teacher Training
- Consulting for prospective students
- Contact person D-USYS teaching evaluation
- Organisation of teaching related events



Dr. Anouk N'Guyen van Chinh

Teaching Specialist

- Teaching development: Support for lecturers in teaching and learning technologies
- Curriculum development and promotion of innovation
- Teaching evaluation and quality management teaching



Dr. Manuel Sudau

Teaching Specialist

- Teaching development: Support for lecturers in teaching and learning technologies
- Curriculum development and promotion of innovation
- Teaching evaluation and quality management teaching



Madlaina Gartmann

Department Administration, Doctoral Administration

- Contact for doctoral students and supervisors of D-USYS
- Academic business from the Professors' Conference
- Management of Department Conference
- Management of Tenure Track Committee



Sophie Graf

Communications

- Contact person for media relations
- Responsible for D-USYS website
- Social media management
- Communication consulting for scientific staff and researchers



Tobias Keller

Communication & Events

- Student Marketing
- Internal communication
- Event organisation and consulting



Dr. Hans Hirter

Head of IT Support Group

- Contact person in IT areas for procurement and management of hardware and software in D-USYS
- Head of operation of computer rooms for students
- Support in IT questions for Departmental Services staff



Esther Scharnhorst

Deputy Head of IT Support Group

- IT support for Departmental Services staff
- Support of Head of IT in all matters



Sandro Bösch

Staff IT Support Group

- IT support for Departmental Services staff
- Support of Head of IT in all matters



Markus Schaffner

Staff IT Support Group

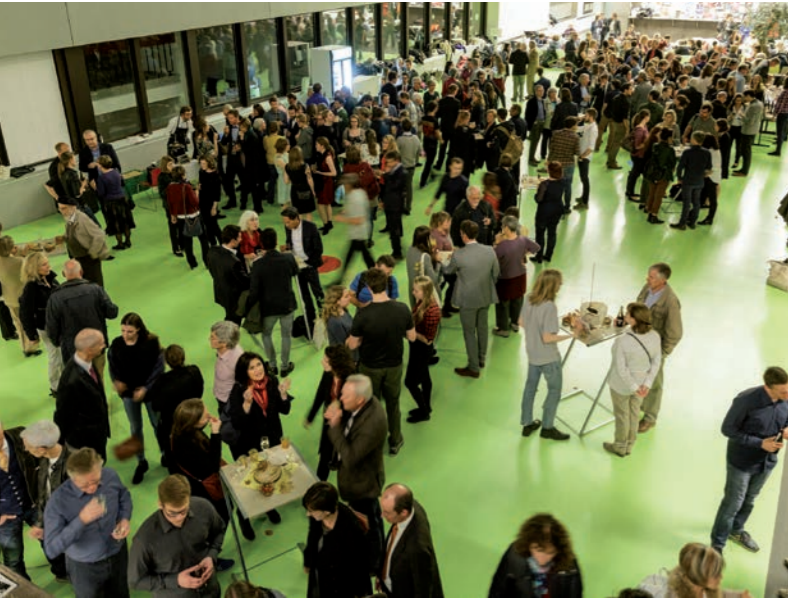
- IT support for Departmental Services staff
- Support of Head of IT in all matters



Dr. Cornelia Kutasi

HR partner D-USYS HR consulting

- Consulting on organisational, structural and legal issues related to employment
- Consulting on leadership issues
- Consulting in difficult situations
- Consulting and support in emeritus positions and reorganisations
- Support in case of long-term illnesses together with case management



Finances

You will have negotiated for an annual group budget (for salaries, equipment and consumables) as well as for a start-up (in most cases). However, **ETH Zurich** also offers competitive, internal funding for different purposes. The [Research Promotion](#) site gives a good overview of the different possibilities for internal funding programmes.

Our contact person at Finance and Controlling is Chantal Winkelmann (SEW B 23; Phone 044 632 75 52; chantal.winkelmann@fc.ethz.ch).

- For research projects (typically pays doctoral students, rarely postdocs; consumables, travel, rarely equipment): [ETH Research Commission](#)
- For scientific equipment (>10 kCHF to 50 kCHF: decision within 3-4 weeks; > 50 kCHF: some months; >200 kCHF: needs matching Research Equipment (R'Equip) proposal to the SNF): [ETH Equipment Program](#)
- For excellent postdocs (highly competitive; applicants need to have publications from their PhD already): [ETH Postdoctoral Fellowships](#)
- For innovative teaching or course development: [Innovedum Fund](#)
- To invite visiting professors (e.g. sabbatical between 3 and 12 months): [Academic Services](#)

In addition, **D-USYS** distributes additional funding, sometimes also in a competitive mode:

- All departments receive funds for student assistants annually. Ask your institute how these funds are handled and distributed.
- If you are mainly teaching in the Environmental Sciences curricula, you will get additional funds depending how much and at what level you teach. Ask your institute and the respective Study Coordinator.
- The D-USYS has a Resource Commission which handles requests for financial support of any kind (typically matching funds required). Ask our Resource Manager Sabine Urban for further information.
- Some institutes have access to special donations to support students, e.g. for their Bachelor's and Master's students. Ask your institute if such funds exist and how they are handled.

The main Swiss research funding is coming from the Swiss National Science Foundation (SNF). The SNF has many different programs for early-career scientists, research projects, research programs and dedicated funding instruments (e.g. for large equipment, networking, etc). Do not hesitate to call them if you have a question. This is welcomed and almost expected.

Dedicated funding to certain research fields, often applied research questions, comes from the Swiss Federal Offices (e.g. for the Environment FOEN or for Agriculture FOAG). Best is to ask your colleagues within the institute for their experiences.

Further funding comes from the EU, foundations or industry. Here, the [Office for Research, EU-Grants-Access](#) and [ETH Transfer](#) are good entry points.

Recruitment, employment and enrollment of doctoral students

If you want to [recruit](#) your group members and want to have more information about employment and [salary](#), get in touch with our contact person at Human Resources (HR), Dr. Cornelia Kutasi (CHN H 50.5; Phone 044 632 67 79; cornelia.kutasi@hr.ethz.ch). You will also receive support for [leadership and development](#) topics.

Advertising for doctoral students is supported by HR who will also help you with the correct employment. In addition, all doctoral students need to enroll with the [ETH Doctoral Administration](#), which is a different track than employment. Ask our Department's Administrator, Madlaina Gartmann, for further [information](#).

Export control

Any kind of technical knowledge exchange, e.g. the transfer of research results, software, and any temporary or definitive delivery of goods that go beyond the Swiss national border are subject to the legal provisions of export control in Switzerland. All ETH members who export goods are affected. Failure to comply with these regulations may result in penal consequences for ETH and the member carrying out the export/exchange. In order to avoid this, ETH has had orientation aids for complying with these regulations since 2019.

Questions on export goods control can be answered by the Financial Services Department: <https://ethz.ch/services/en/finance-and-controlling/riskmgmt/exportkontrolle.html>



Locations

The professorships and research groups of the D-USYS are located in several [buildings](#) of the ETH Zurich Zentrum campus (Building Area UN). The main buildings of D-USYS are the CHN and LFW buildings which are open Monday to Friday from 6.30 am to 7 pm. They are closed Saturday and Sunday, but can be opened with a PIN code and your ETH card. You can set your PIN at the [Addresses and Personal Data Portal](#) under ETH-card / change admission PIN-code.

Important people for building issues, the **caretakers**:

CHN: Gazmend Halimi
CAB F 41.1, Phone 044 632 96 24
gazmendhalimi@ethz.ch

LFW: Franz Brechbühl
LFW B 12.1, Phone 044 632 48 50
franzbrechbuehl@ethz.ch

Competence Centers and Research Platforms

D-USYS is hosting two (out of ten) Competence Centers at ETH Zurich and one Research Platform.

- Zurich-Basel Plant Science Center ([PSC](#))
- World Food System Center ([WFSC](#))
- Genetic Diversity Centre Research Platform ([GDC](#))

If you want to become a member with your professorship (all your group members will be included as well), please contact the respective Executive Offices. You typically have to pay a small annual membership fee and have access to their services, many networking opportunities and sometimes also to competitive funding. The PSC also offers graduate schools for your doctoral students.

Moreover, we use facilities of the [AgroVet Strickhof cooperation](#) and the [Research Station for Plant Sciences](#). Please ask your colleagues at your institute or read a short description online or in the self-evaluation report.

Some frequently asked questions

As every institute has its own way to organize things and in some institutes orders are centrally organized by a specific person, please get in contact with the administrative assistant or the technician of your institute or ask your own administrative assistant. They will show you how to go about it. If you still have unresolved issues, the following examples may help you.

- Do you need office furniture? Order [online](#) from ETH Public Real Estate Management on the ETHIS platform.
- Do you need help setting up your ETH Zurich homepage? Contact [Corporate Design](#).
- Do you need office supplies? Order [online](#) from the ETH webshop on the ETHIS platform.
- Do you need your laboratory to be reconstructed? Contact your institute.
- Do you need to print something special? Check the [Print and Publish Shop](#).
- Do you need an office key? Order it with the [online form](#). You can pick it up at the Information and Service Centre (ISC) at the CAB building, F 41.1.

- Do you need a meeting or a seminar room? Reservations of rooms in Outlook or via the [Rectorate](#).
- Do you need IT support? Either contact directly the ETH IT [Service Desk](#) or the D-USYS ISG (Informatik Support Gruppe). Each institute has its own [IT coordinator](#).
- How to communicate important research to the media? The communication team at D-USYS or the [ETH Media Relations](#) team is ready to help.
- Do you need access to books and publications? The [ETH Library](#) offers many [locations](#) with books, maps and special collections and a [Digital Library](#).
- Do you need information about your accounts or staff members? Check out [ETHIS](#), the ETH Information and Support System.
- Are you hungry? ETH has many opportunities for eating. Check out the [Gastronomy webpage](#).

Lots of great information about D-USYS is available in our latest self-evaluation report (finished in Oct. 2018). If you have not received one, please ask the Departmental Services staff.



We hope you will settle in quickly. We wish you an excellent start, a pleasant stay at ETH, and we look forward to a successful collaboration!

Alex Widmer
Head of Department



ETH Zurich
Department of Environmental Systems Science (D-USYS)
Universitaetstrasse 16
CH-8092 Zurich

www.usys.ethz.ch
twitter.com/usys_ethzh

Publisher: Department of Environmental Systems Science D-USYS
Editor: Tobias Keller
Graphic Design: Karin Frauenfelder
Photos: ETH Zurich, Tom Kawara
Printing: ETH Zürich

© ETH Zurich, September 2023